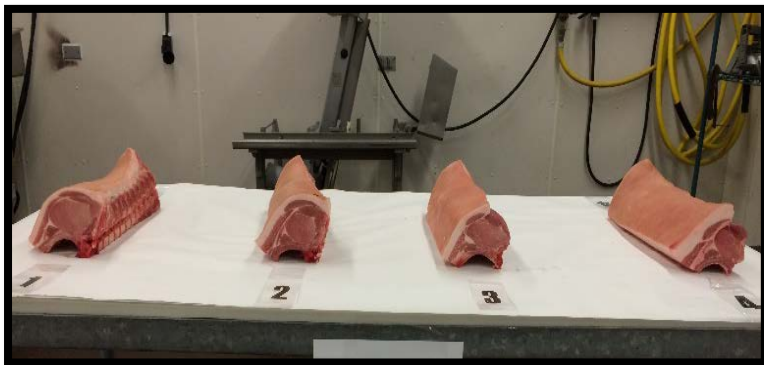


“Striving for Excellence!”



Topics:

Beef, Lamb, Pork
Evaluation

- Carcass Classes
- Wholesale Classes
- Retail Classes
- Retail ID
- Notetaking

**3rd ANNUAL
MEAT JUDGING
STUDENT
CLINIC**

AUDIENCE: 2 Upper
Classmen (jr./sr.) per school

WHEN: Saturday:
20th January 2018
8.30a.m. – 4.30p.m.

LOCATION: Animal Sciences Bldg,
2029 Fyffe Ct.
Columbus, OH 43210

Cost: \$60.00

REGISTER AT:

<https://goo.gl/forms/gVVC8vhEU7n7jm5h1>

Brought to you by:

- Dept. of Animal Sciences
- Agriculture Education Service Staff



THE OHIO STATE UNIVERSITY

COLLEGE OF FOOD, AGRICULTURAL,
AND ENVIRONMENTAL SCIENCES

<https://cfaes.osu.edu/>

CF A E S provides research and related educational programs to clientele on a nondiscriminatory basis. For more information go.osu.edu/cfaesdiversity