



January 2, 2020

1328 Dover Road  
Wooster, OH 44691-9000

330-287-1330 Phone  
330-287-1333 Fax

ati.osu.edu

Dear FFA and 4-H Club Members and Advisors:

You are invited to participate in the annual Ohio State ATI Invitational Dairy Cattle Judging Contest. This year’s contest will be held on **Saturday, February 29, 2020 at the Ohio State ATI Dairy, located at 2332 Barnard Road** (between Dover Road and Ely Road), **Apple Creek, Ohio. Please note the change of location of the contest from prior years.** With the contest being held at the ATI Dairy, contestants will be divided into 5 rotating groups. Contestants will judge the live animal classes from the animal alleys with the animals being restrained in the headlocks in the pen. Contestants will need to wear appropriate clothing to be in close contact with animals. **Schools/clubs should provide plastic boots for their contestants.**

Registration will be in the ATI Dairy classroom. The milking parlor and holding pen will be used for contestants to gather prior to and after the contest. There is minimal heat in the dairy barn, holding pen, and parlor – dress appropriately for the weather. Coaches and advisors may want to bring a portable chair as seating will not be provided.

Contest Schedule:            8:15 to 9:15 am    Registration at ATI Dairy classroom (2332 Barnard Road, Apple Creek, OH)  
                                      ~ 9:15 am            Contest begins as registration is completed  
                                      ~ 11:15 am         Contest ends – followed by official placings

**Parking is very limited at the ATI Dairy – absolutely no bus parking. Coaches/advisors may drop off contestants at the ATI Dairy and then park in the gravel areas around the grain drying bins, old beef feedlot, swine center, and machinery storage barn on the ATI access road between Barnard and Apple Creek roads (at the bottom of the hill from the ATI Dairy). As in the past, overflow parking is available at the East Union Township Garage (old fire station) located just south of the Equine Center on Apple Creek Road. Do not park at the fire station. A van shuttle will be available to transport “drivers” between the parking areas and the ATI Dairy. (See map below)**

FFA chapters and 4H clubs can enter as many individuals on a “team” as desired. The scores for the top three individuals from each “team” will become the official team score.

Entry fees are \$10.00/contestant (cash or check) and are due at the time of registration. Make checks payable to: ***The Ohio State ATI Invitational Dairy Cattle Judging Contest.***

Rules for the contest are listed below in the accompanying document. The contest will be scored by Tom Oglesby or Joel Albright (Ohio FFA CDE coordinators). The Ohio FFA computerized scan form will be used to score the contest. An example of the form is in this document. Results will be posted at [www.judgingcard.com](http://www.judgingcard.com) as soon as possible after scoring.

**In the event of cancellation, notification will be posted on the Ohio State ATI website: <http://ati.osu.edu/>**

We look forward to your participation at the contest. If you have any questions, please contact Mr. Royce Thornton: 330-287-1373 or [thornton.5@osu.edu](mailto:thornton.5@osu.edu).

Thank you,

Mercedes Wilson  
President  
Ohio State ATI Dairy Club

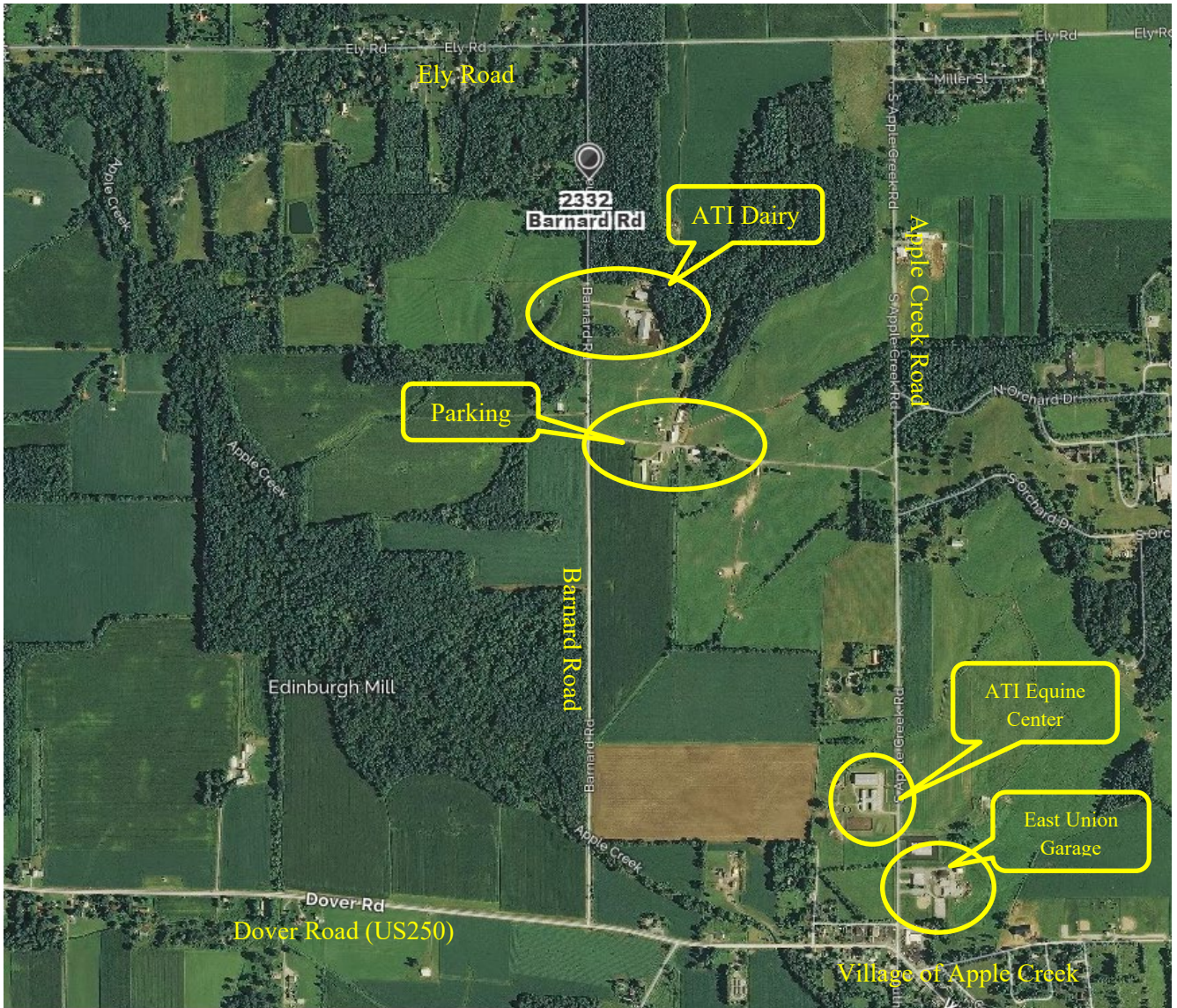
Royce Thornton  
Dairy Program Coordinator  
Dairy Club Advisor

Shaun Wellert  
Dairy Science Faculty  
Dairy Club Advisor

Brandon Lawwill  
Dairy Herd Managers  
Dairy Club Advisors



Ariel view of contest and parking locations (Grace Drake Agricultural Laboratory)

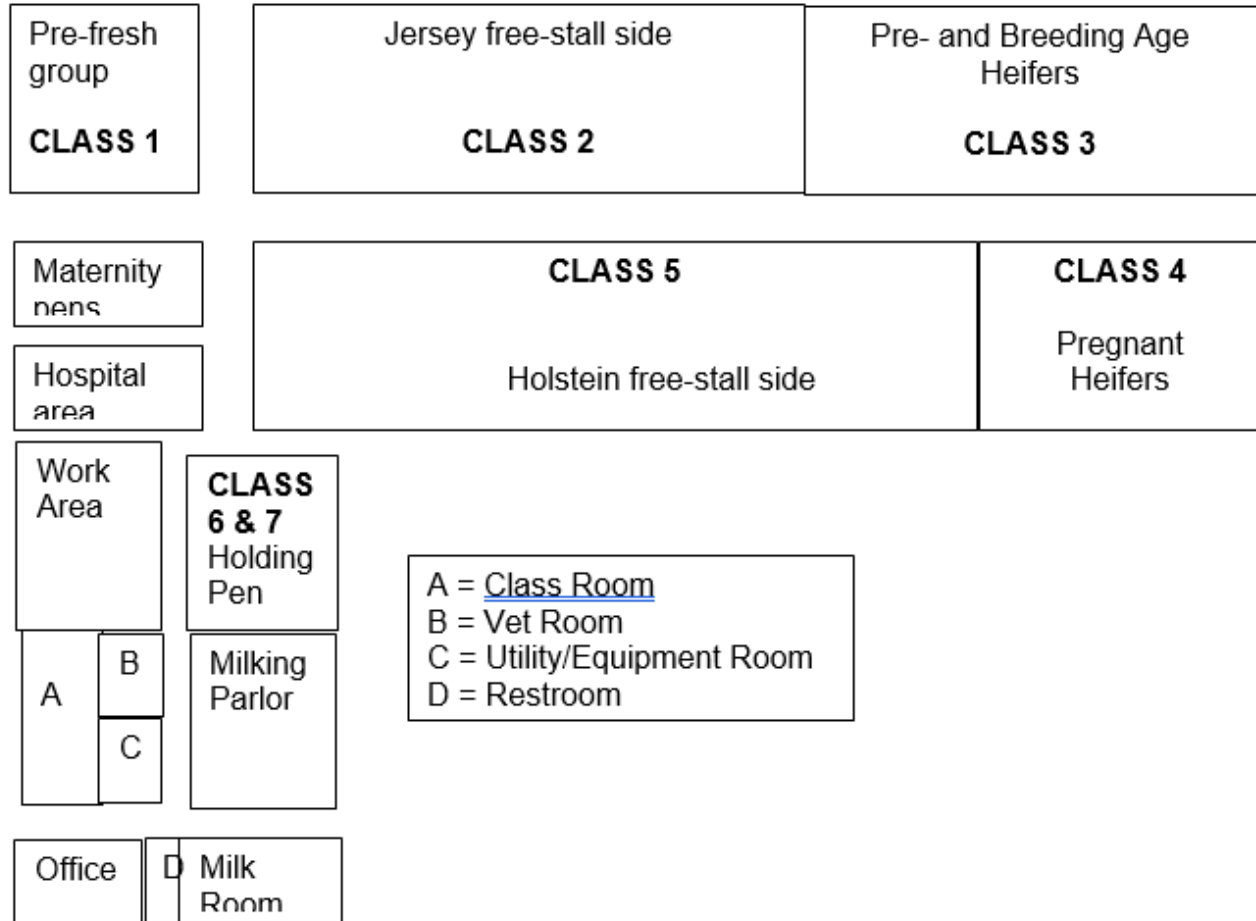


**Parking is very limited at the ATI Dairy – absolutely no bus parking. Coaches/advisors may drop off contestants at the ATI Dairy and then park in the gravel areas around the grain drying bins, old beef feedlot, swine center, and machinery storage barn on the ATI access road between Barnard and Apple Creek roads (at the bottom of the hill from the ATI Dairy). As in the past, overflow parking is available at the East Union Township Garage (old fire station) located just south of the Equine Center on Apple Creek Road. Do not park at the fire station. A van shuttle will be available to transport “drivers” between the parking areas and the ATI Dairy.**



Layout of the ATI DAIRY facility and contest locations.

Registration is in the classroom – labeled as A on the following diagram.







## *OHIO STATE ATI DAIRY CATTLE JUDGING CONTEST*

### *RULES*

1. Anyone who is a 4-H or FFA member is eligible to participate.
2. Each school, chapter, or club may enter one “team” consisting of one or more individuals – as many as desired.
3. The scores for the top three individuals from each “team” will become the official team score used for team awards.
4. Individuals may also compete as contestants.
5. Each contestant needs to bring a clipboard and 2 sharpened **No. 2 pencils**. Placing logs and scan forms will be provided. **NO OTHER MATERIALS** may be used during the contest.
6. Coaches are not to mingle with the contestants after the contest has officially started. If they are viewing the contest they should stay back away from the judging arena.
7. Contestants are not allowed to talk to each other from the start to the finish of the contest. This includes the time between as well as during the classes.
8. **Contestants are not allowed to bring cell phones into the judging areas anytime during the contest.**
9. We will continue to enforce the honesty policy. This contest is an honest and fair way to prove that a student has a talent for dairy cattle evaluation. We want to recognize those students that excel in this area and who do it honestly. We are structuring the contest to be an efficient quality event. We seek to provide quality animals in a structured learning environment, with the goal of giving you an outstanding educational judging experience.
10. In cases of ties, high individual and high team will be determined by judging consistency, i.e. point spread between the highest and the lowest class scoring. If the tie still exists then the point spread between the highest and next lowest class score and so on will be used.
11. If any questions arise concerning interpretation of the rules, the decision of the official judge will prevail.
12. The Ohio State ATI Dairy Club or The Ohio State University is not responsible for lost property, injuries, or accidents during the contest.
13. **ANY INDIVIDUALS OR TEAMS CAUGHT VANDALIZING THE FACILITIES WILL BE DISQUALIFIED, ASKED TO LEAVE THE PREMISES, AND WILL BE HELD FINANCIALLY RESPONSIBLE FOR THE DAMAGE.**



## *OHIO STATE ATI DAIRY CATTLE JUDGING CONTEST*

### **FORMAT**

1. Five classes of four dairy animals will each be placed on desired conformation. Classes will consist of heifers, young cows, and/or mature cows. Each class is worth fifty (50) points.
  - a. All classes will be selected from the **Holstein** and **Jersey** dairy cattle breeds.
  - b. Contestants will be permitted to view the animals from all angles, but will not be permitted to touch or handle them.
  - c. Classes will be numbered 1, 2, 3, and 4.
  - d. Each live animal class will be allotted 15 minutes (questions included).
  - e. The sire selection and pedigree classes will be combined into one 15 minute period.
2. Two classes of 5 objective questions will be asked regarding factors on two of the five classes of dairy cattle. Twenty-five (25) points per question class.
3. One pedigree evaluation class (no animals present). Fifty (50) points are allotted for this class. Pedigrees will be evaluated on the following criteria:
  - a. The animal's ability to transmit production and type traits to offspring.
  - b. Completeness (number of daughters or records), accuracy (reliability or predictability), level of performance (production and type), and profitability.
4. A sire selection placing class. The contestant will be given four bull pedigrees with performance data and one cow's pedigree with performance data. The contestant will rank the four bulls according to the mating desirability with the cow. This section will be worth fifty (50) points.
5. Scoring Guide:
  - a. Individuals:
    - i. Five placing classes:        50 points x 5 = 250 points
    - ii. Two question classes:        25 points x 2 = 50 points
    - iii. One pedigree class:        50 points x 1 = 50 points
    - iv. One sire selection class:    50 points x 1 = 50 points

Total points possible per individual        400 points
  - b. Teams:        400 points x 3 individuals =        1200 points



CDE Scorer Dairy Cattle Form (2010)

Form # 284868-1

Incorrect Marks Correct Mark

Event Name/Team Name/Additional Info

Team/Schl ID

Codes

Full Name (First, Space, Last)

Placing Classes

To Order, Contact PTM Software, LLC - www.ptmsoft.com

Questions on Placing Classes

Written Exam

Judge Reason Scores

Herd Record, Raw Scores, or Identification- A