

External Anatomy of Poultry Kept on Small or Backyard Flocks: Guinea Fowl

articles.extension.org/pages/65365/external-anatomy-of-poultry-kept-on-small-or-backyard-flocks:-guinea-fowl

Guinea fowl have many of the same basic external parts as chickens and turkeys. These parts include the eyes, ears, beak, wattle, hocks, and shanks. The helmeted guinea fowl, which is the most common species of guinea fowl, also has a bony protrusion on its head. In addition to this helmet, another characteristic particular to the guinea fowl is its headcap skin. Figures 1 and 2 show the external parts of a helmeted guinea fowl.

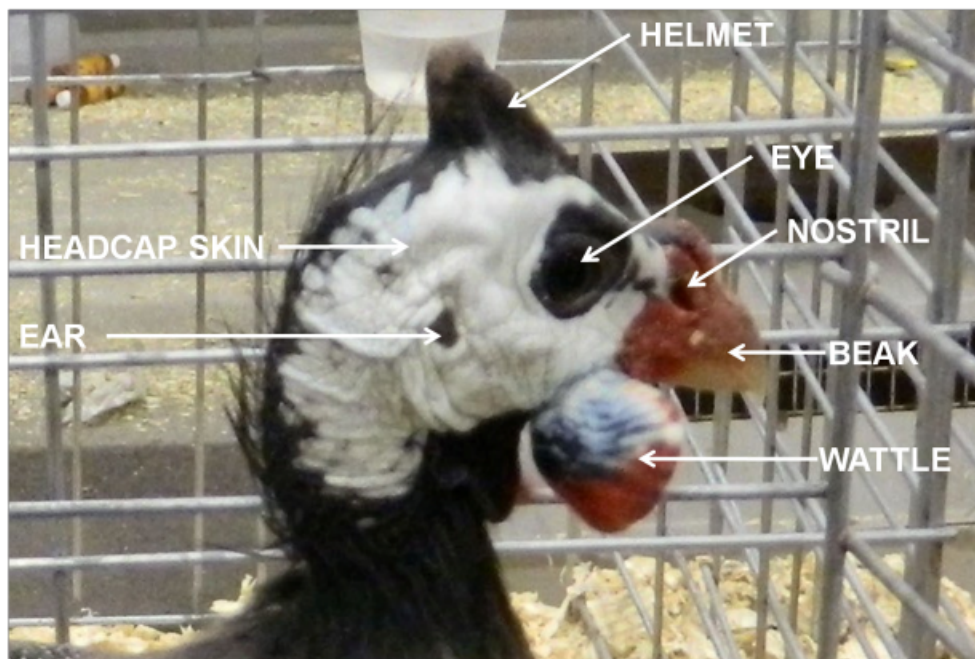


Fig. 1. Parts of the head of a guinea fowl. Source: Jacquie Jacob, University of Kentucky.

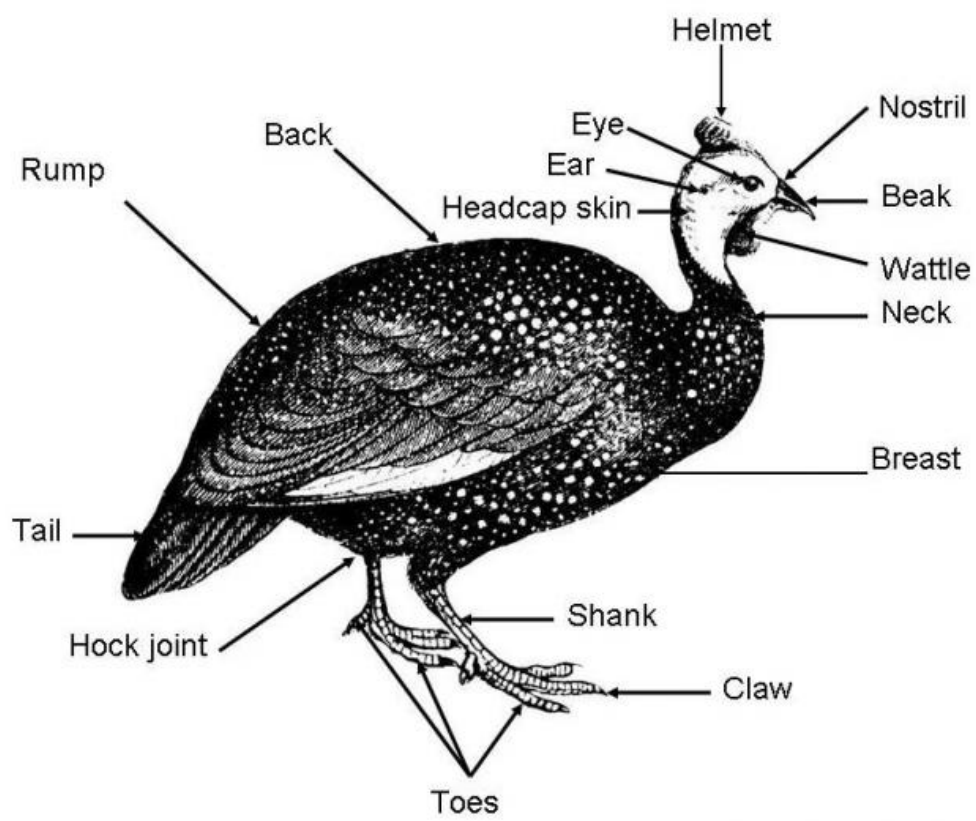


Fig. 2. Parts of a guinea fowl. Source: Public domain.

For More Information

[Keeping guinea fowl](#), Jacquie Jacob and Tony Pescatore, University of Kentucky